

# ST BRIGIDS

SOUTH AUSTRALIA



## St Brigids: 23 Boulton Street, Goolwa, SA, 5214

Stunning St Brigids is ideal for two and provides the perfect place to simply 'get away from it all'. Take in the rustic elegance of this 100 year old Baltic pine church with original features and intricate timber work, then climb the staircase to the mezzanine bedroom and take in the views through the double glass doors overlooking the beach. Set on a peaceful and idyllic beach front sand hill on the outskirts of Goolwa Beach, this cottage style holiday home features an open plan lounge and kitchen complete with a baker's oven that creates a cozy ambience and even enjoys a two person spa for total relaxation.

The historic town of Goolwa stands at the mouth of the Murray River on Lake Alexandrina, just an hour's drive from Adelaide through breathtaking countryside. An extremely popular spot for 'sea changers,' Goolwa Beach's fine sand and rolling hills make it the perfect place to slow down and take in the beauty of nature. Visit Hindmarsh Island and the Coorong that provides kilometres of unspoiled wetlands and at the end of the day you can enjoy award winning local wines.

*Unwind in the rustic  
elegance of  
St Brigids a 100  
year old Baltic pine  
church - be lulled to  
sleep by the sound of  
the sea*

### The OTIS Foundation

PO Box 1191, Bendigo Central  
Victoria, 3552

Phone: (03) 5444 1184

email: [bookings@otisfoundation.org.au](mailto:bookings@otisfoundation.org.au)

[otisfoundation.org.au](http://otisfoundation.org.au)

*Providing sanctuaries to nurture those facing the challenges of living with breast cancer*

THE **OTIS**  
FOUNDATION   
BREAST CANCER RETREATS

# ST BRIGIDS

SOUTH AUSTRALIA

## Retreat details

### Location and area

Goolwa is located approximately 88km from Adelaide (1hr 10min drive).

St Brigids is located on the outskirts of Goolwa Beach on the stunning Fleurieu Peninsula. The retreat adjoins a native reserve and is close to shops, a golf course and the Murray River. Goolwa is a town tailored for water-sport enthusiasts. You can also plot a voyage of discovery from your own powerboat, yacht or canoe or sit back and enjoy a tour on a grand paddle steamer. As Goolwa represents the point where the Murray River meets the sea, this historic town was once one of Australia's major ports and has a history rich in shipbuilding, trade and transport, which is now a growing tourist and holiday centre.

### Accommodation

Ideally for a couple, St Brigids has a queen bed on the upper level mezzanine that features double glass doors opening onto a balcony. Have a lie in and listen to the relaxing sounds of the rolling waves!

### Availability

St Brigids is available for four nights stays from Monday to Friday throughout April to September.

### Pets/Smoking

Pets are not permitted and St Brigids is strictly smoke free.

### Heating/Cooling

The retreat has a pot belly wood heater that heats the cottage (kindling not provided).

### Key access

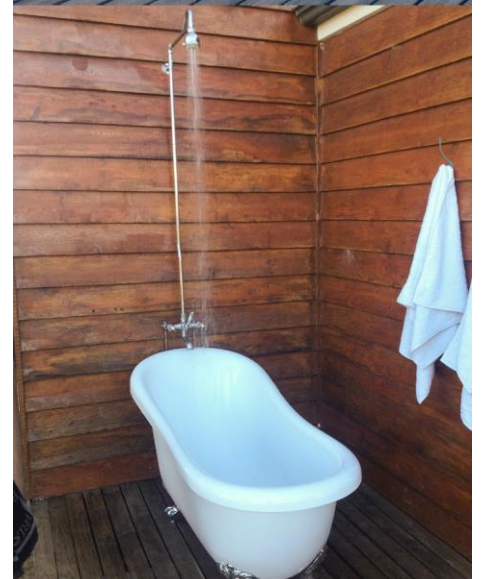
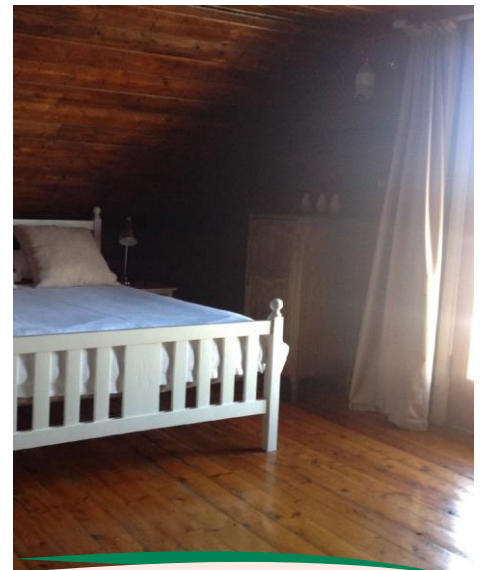
St Brigids has an electronic entry system. An access code will be provided to you by OTIS approximately two weeks before your stay.

## Other considerations

Guests need to be aware that the staircase to the mezzanine floor is steep and not suited to those who have limited mobility.

### What to bring

All bedding linen and bath towels are provided at St Brigids. Guests are required to bring their own food, personal items and beach towels. It has a fully equipped kitchen and BBQ is available for guest use. Wood for the pot belly heater is supplied, however, guests need to supply kindling.



### The OTIS Foundation

PO Box 1191, Bendigo Central  
Victoria, 3552

Phone: (03) 5444 1184

email: [bookings@otisfoundation.org.au](mailto:bookings@otisfoundation.org.au)

[otisfoundation.org.au](http://otisfoundation.org.au)

*Providing sanctuaries to nurture those facing the challenges of living with breast cancer*

THE **OTIS**  
FOUNDATION  
BREAST CANCER RETREATS

