

# ALYONAH

VICTORIA



## **Alyonah:** 12 Langdon Court, Daylesford, VIC, 3460

Alyonah is a luxurious holiday home located on the edge of Daylesford made available to OTIS by the Frost family. The combination of expansive lawn areas, light filled interior, open plan layout and high-end furniture combine to create such a welcoming feel, you may find yourself not wanting to leave! This well maintained retreat is the perfect 'home away from home', it has all the essentials and is filled with additional touches such as games, books, DVDs and even boasts a heated spa and alfresco dining area. A fantastic children's playground ensures that the kids will be happy too.

A relaxing 20min stroll or a 2min drive will find you in the heart of Daylesford. The region is known as 'spa country'. Visitors who come here in search of a spot of pampering are spoilt for choice. It's the perfect place for relaxation and 'cultural' recreation with numerous cafes, bars and restaurants, bookshops and boutique shopping. Perched on a sloping hill in the Wombat Hill Botanical Gardens, you may also discover the famous Convent Gallery which houses three levels of art, shopping, a restaurant and bar set within six acres of beautiful gardens.

**The OTIS Foundation**  
PO Box 1191, Bendigo Central  
Victoria, 3552

Phone: (03) 5444 1184  
email: [bookings@otisfoundation.org.au](mailto:bookings@otisfoundation.org.au)  
[otisfoundation.org.au](http://otisfoundation.org.au)

*Providing sanctuaries to nurture those facing the challenges of living with breast cancer*

*Alyonah is stylish  
living, peacefully  
situated on the edge  
of Daylesford*

THE **OTIS**  
FOUNDATION  
BREAST CANCER RETREATS 

# ALYONAH

VICTORIA

## Retreat details

### Location and area

Alyonah is just a couple of minutes from the beautiful township of Daylesford, located between Castlemaine and Creswick. Daylesford is approximately 115km north-west of Melbourne (1hr drive).

The picturesque town of Daylesford sits at the foothills of the Great Dividing Range and is surrounded by farmland, rolling hills and forests. Take a short drive from Alyonah to wander through boutique stores in beautifully preserved historic buildings along the main, tree-lined street or visit one of the weekly markets. Or, if you enjoy a slower pace, visit Lake Daylesford where you'll find a café, walking tracks, fishing spots and rowboats to enjoy the views from the lake.

### Accommodation

Alyonah sleeps six guests with a queen bedroom, double bedroom and third bedroom with two single beds. The Master bedroom has an ensuite and deck access, the additional two bedrooms share a two-way bathroom.

### Availability

Alyonah is available for three night stays from Tuesday to Friday at limited times throughout the year. The retreat is not available on weekends or public holidays.

### Pets/smoking

Pets are not permitted and Alyonah is strictly smoke free.

### Heating/Cooling

The retreat has a split-system that can be used for cooling and heating, a gas log fire in the main area and the bedrooms all have Nobo heaters and toasty electric blankets.

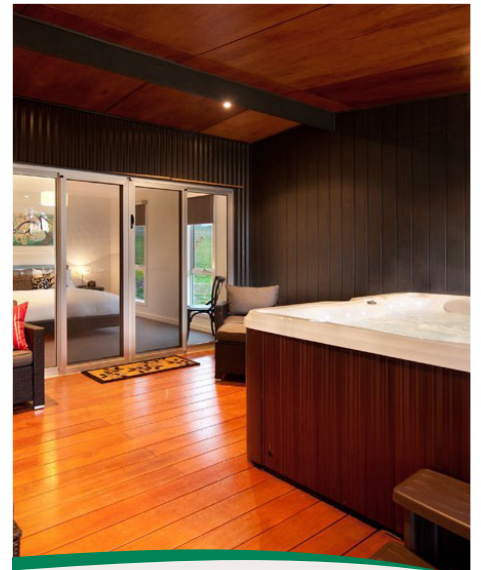
### Key access

The keys are available for collection from a key box located at the property. OTIS will contact you two weeks prior to your stay to provide the location and a code to access the keys.

## Other considerations

### Stay limit

Guests are welcome for one stay only at this property.



### The OTIS Foundation

PO Box 1191, Bendigo Central  
Victoria, 3552

Phone: (03) 5444 1184

email: [bookings@otisfoundation.org.au](mailto:bookings@otisfoundation.org.au)  
[otisfoundation.org.au](http://otisfoundation.org.au)

*Providing sanctuaries to nurture those facing the challenges of living with breast cancer*

THE **OTIS**  
FOUNDATION  
BREAST CANCER RETREATS

